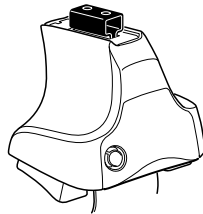
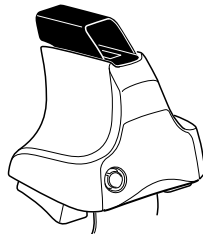
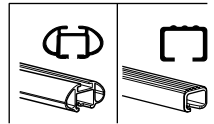


Kit 1448

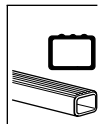
SSANGYONG Actyon, 4-dr Double Cab, 06–
SSANGYONG Actyon, 5-dr SUV, 06–



754 Rapid System
480R Rapid Traverse (North America)



480 Traverse (North America)



754 Rapid System
480R Rapid Traverse (North America)

754 Rapid System
480R Rapid Traverse (North America)

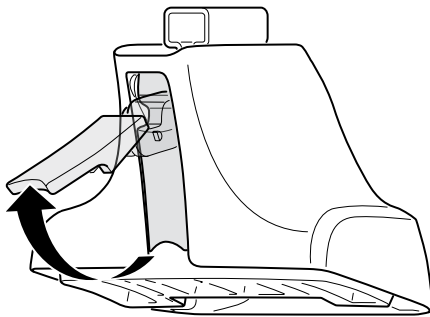
480 Traverse (North America)

(North America)

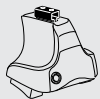
902 x 2
617 x 2
217 x 4

x 1

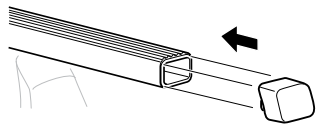
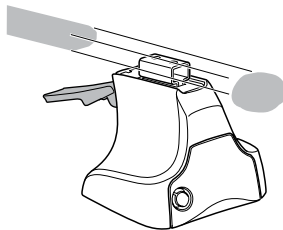
1



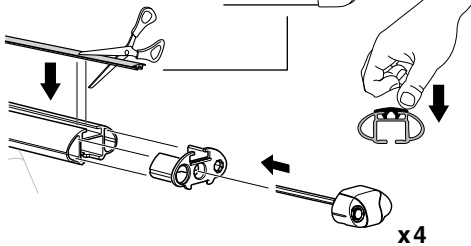
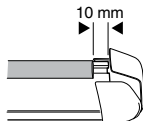
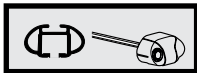
2



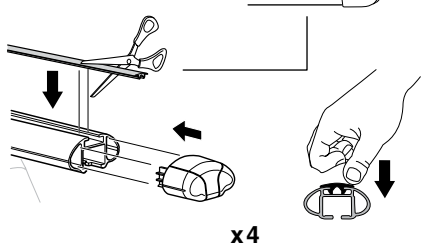
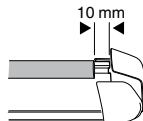
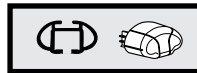
754 Rapid System
480R Rapid Traverse
(North America)



x4



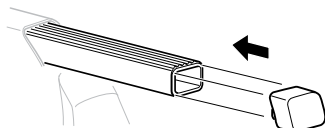
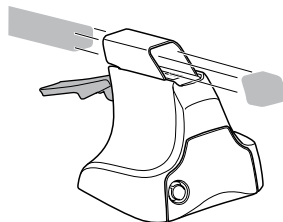
x4



x4

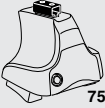


480 Traverse
(North America)

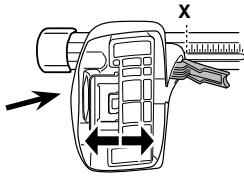


x4

3

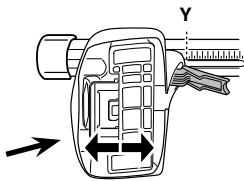


754 Rapid System



X

	X
SSANGYONG Actyon, 4-dr Double Cab, 06-	48
SSANGYONG Actyon, 5-dr SUV, 06-	48



Y

	Y
SSANGYONG Actyon, 4-dr Double Cab, 06-	44,5
SSANGYONG Actyon, 5-dr SUV, 06-	44,5

3



480R Rapid Traverse

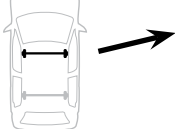


480 Traverse

(North America)



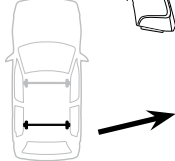
X inch/mm



	X inch	X mm
SSANGYONG Actyon, 4-dr Double Cab, 06-	44 1/2"	1131 mm
SSANGYONG Actyon, 5-dr SUV, 06-	44 1/2"	1131 mm

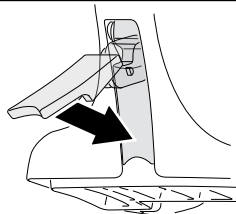


Y inch/mm



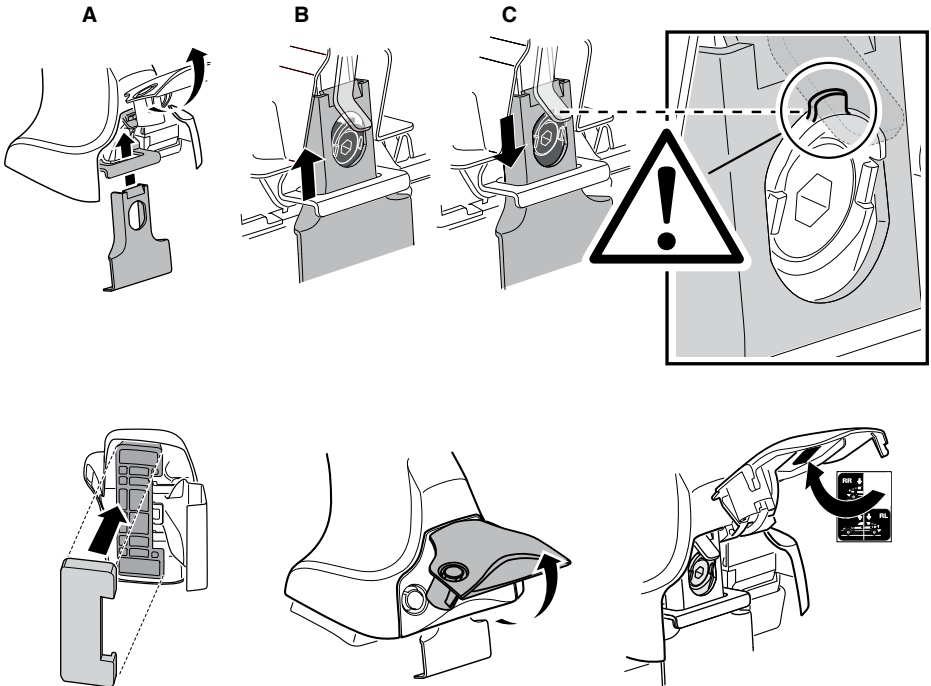
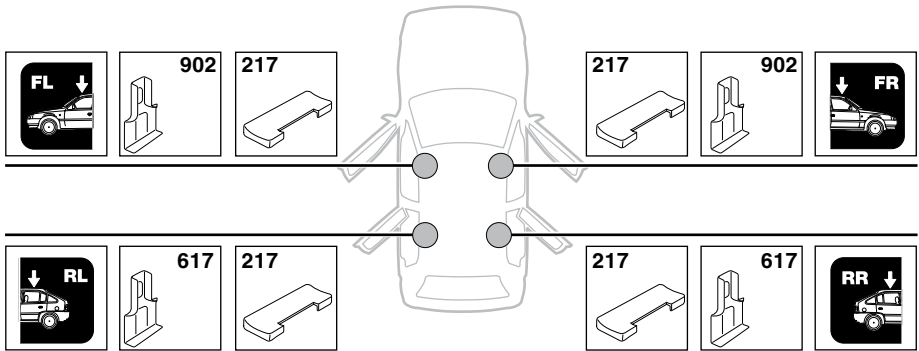
	Y inch	Y mm
SSANGYONG Actyon, 4-dr Double Cab, 06-	43 1/8"	1096 mm
SSANGYONG Actyon, 5-dr SUV, 06-	43 1/8"	1096 mm

4

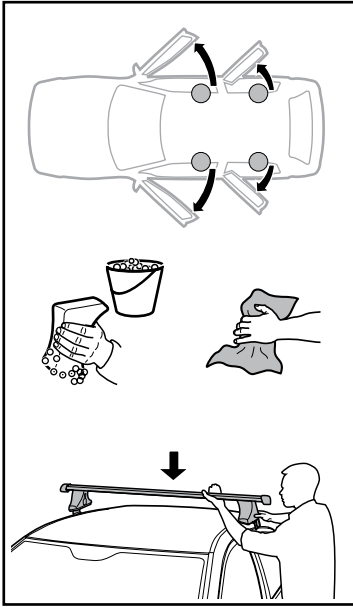


5

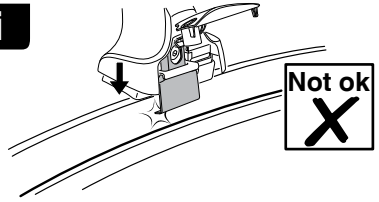
SSANGYONG Actyon, 4-dr Double Cab, 06–
 SSANGYONG Actyon, 5-dr SUV, 06–



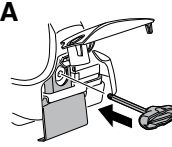
6



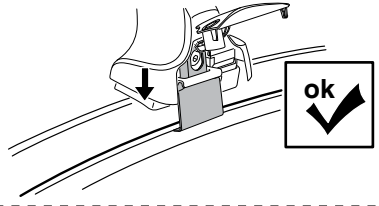
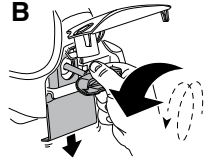
i



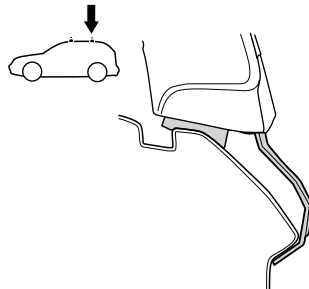
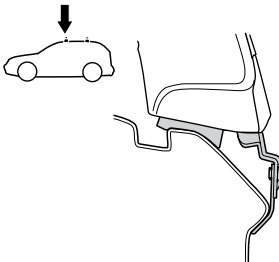
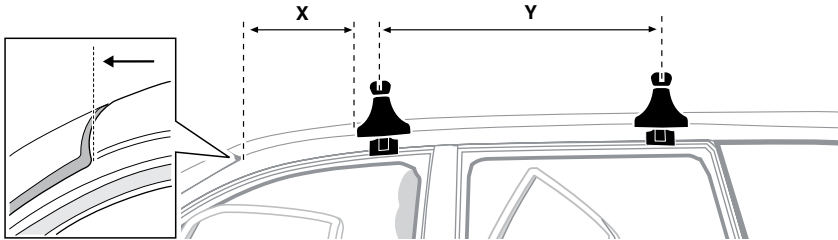
A



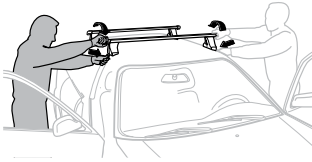
B



	X mm	Y mm	X inch	Y inch
SSANGYONG Actyon, 4-dr Double Cab, 06-	270 mm	700 mm	10 ⁵ / ₈ "	27 ¹ / ₂ "
SSANGYONG Actyon, 5-dr SUV, 06-	270 mm	700 mm	10 ⁵ / ₈ "	27 ¹ / ₂ "



7



GB/US Tighten alternately
 D Die Schrauben abwechselnd anziehen
 F Serrer alternativement chaque côté
 NL Afwisselend aan de linker- en de rechterkant aandraaien
 I Alternare il serraggio delle viti
 E Apertar alternativamente
 PT Aperte alternadamente
 S Dra åt växelvis
 FIN Kierrä vuorotellen
 EST Pinguldage vaheldumisi
 LAT Pieļieciet pamišus
 LIT Užsukinėkite pakaitomis
 PL Śruby dokręcaj naprzemiennie
 RU Затягивайте попеременно

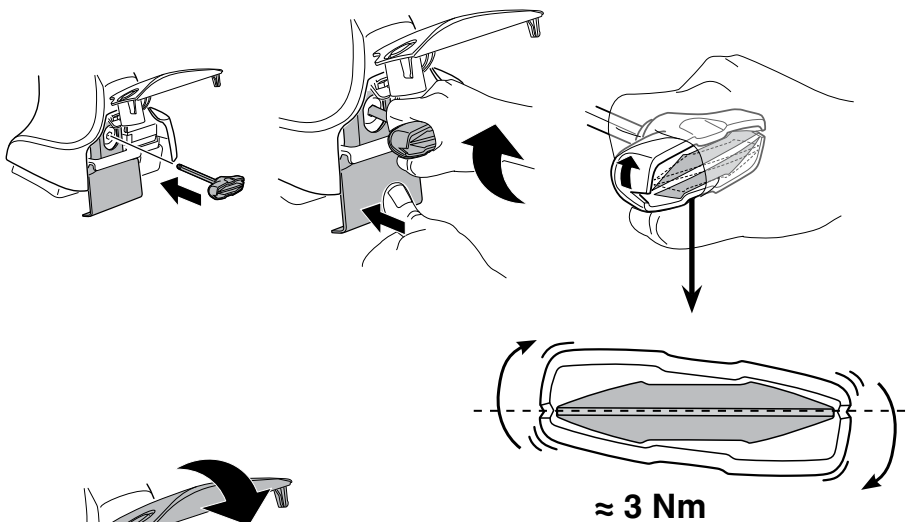
CZ Pokręťta bagażnika dokręcaj dokręcaj naprzemiennie.
 SK Dofahajte striedavo
 SLO Privijajte izmenično.
 HR Naizmjerno zategnite
 HU Egymástól függetlenül szorítandó
 GR Σφιγίγες εναλλάξ
 TR Dönüşümlü sıkın

中文 交替拧紧

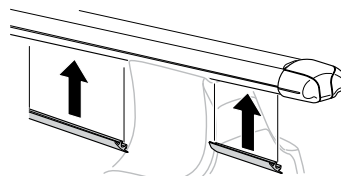
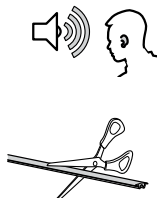
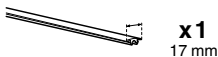
한국어 번갈아 가며 조이십시오.

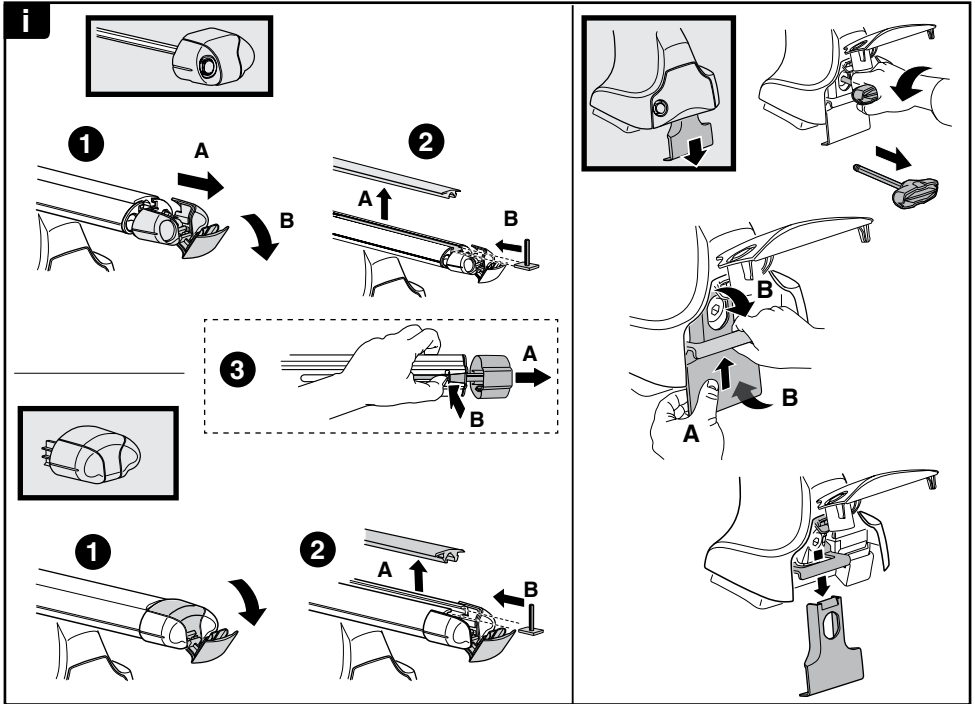
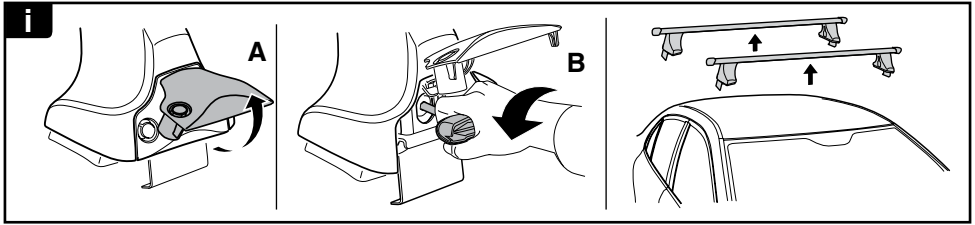
日本語 交互に締め付けてください。

ไทย ชันในแบบสลับ

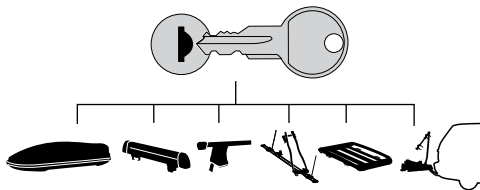


8





THULE
SWEDEN
**ONE
KEY
SYSTEM**



544 (x4)

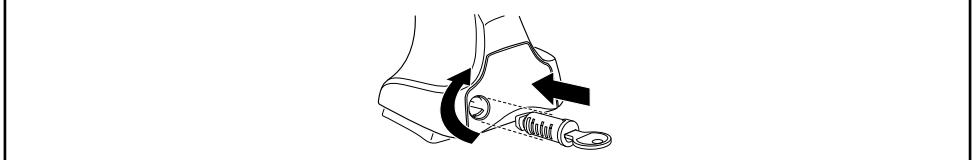
596 (x6)

588 (x8)

NA **510** (x10)

EUR **452** (x12)

ASIA

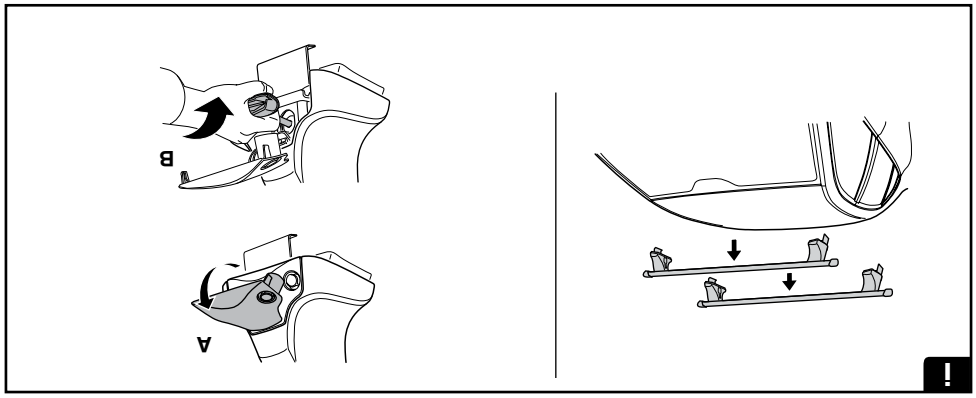
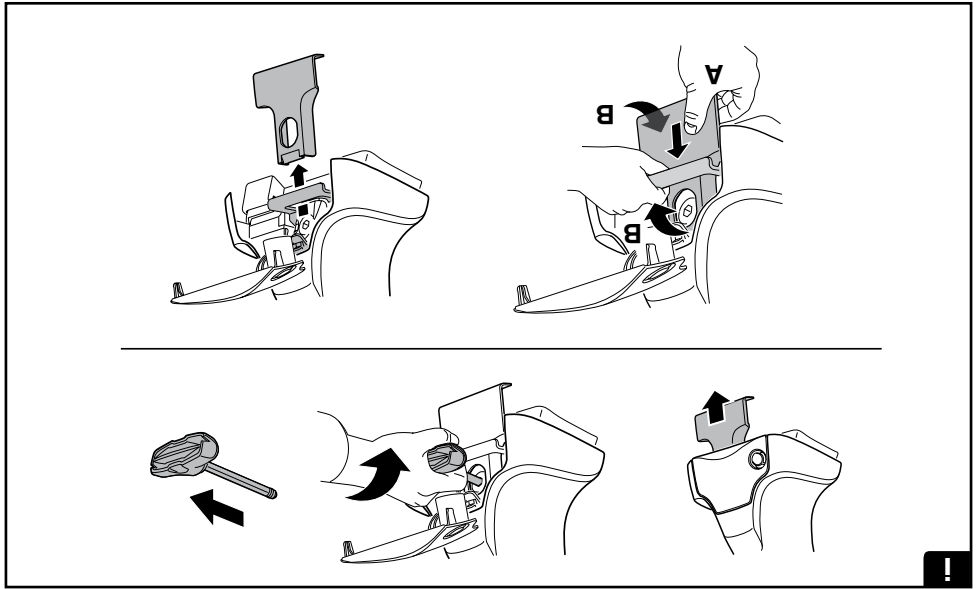


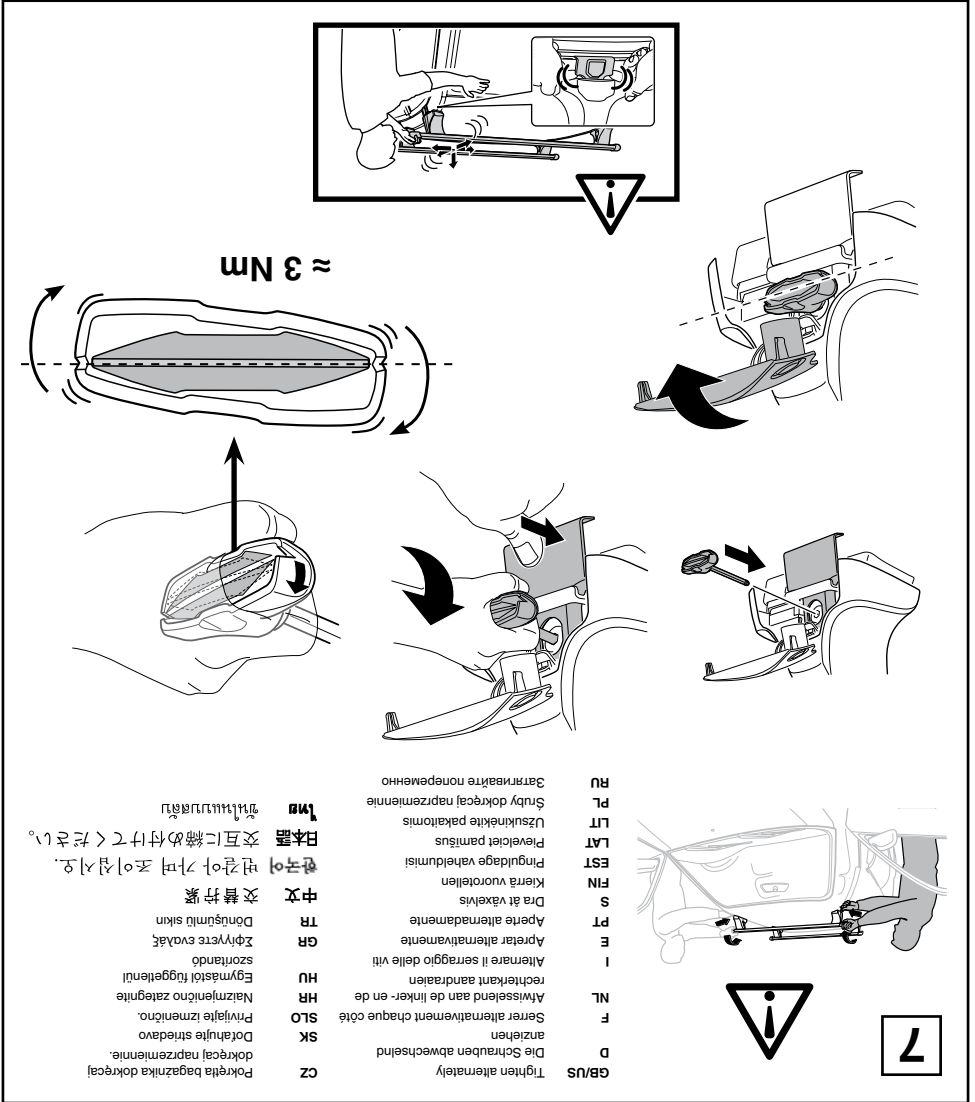
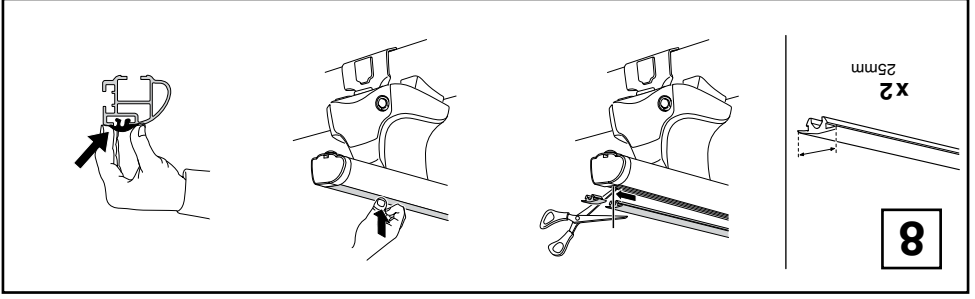
WW ▶ Thule Sweden AB, Box 69, 330 33 Hillerstorp, SWEDEN

NA ▶ Thule Inc., 42 Silvermine Road, Seymour, Connecticut 06483, USA

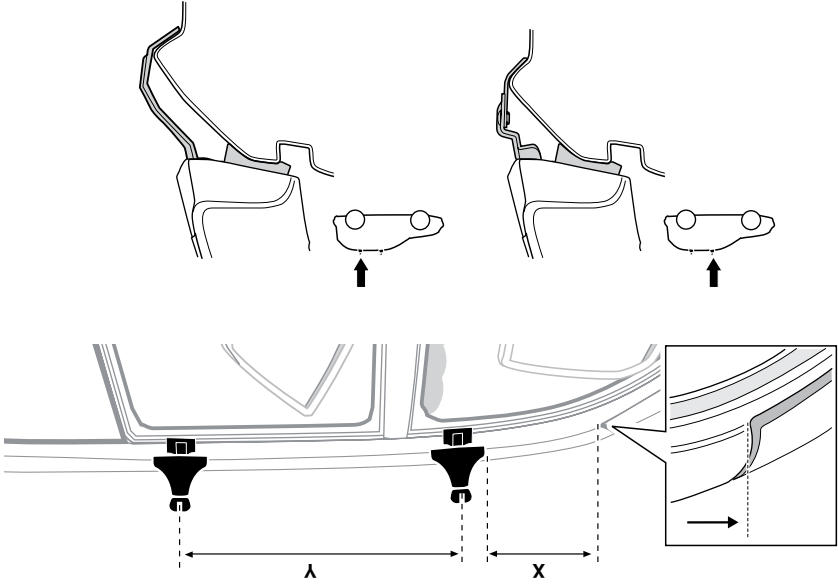
info@thule.com
customer.service@thule.com

www.thule.com

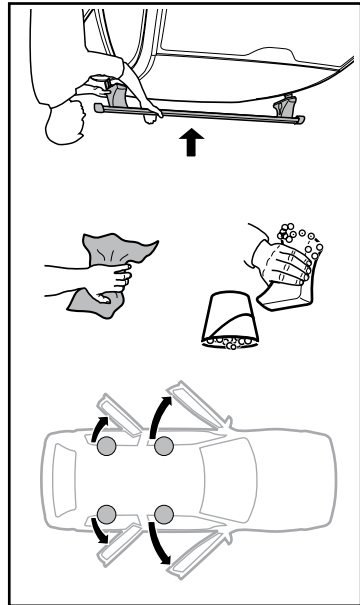




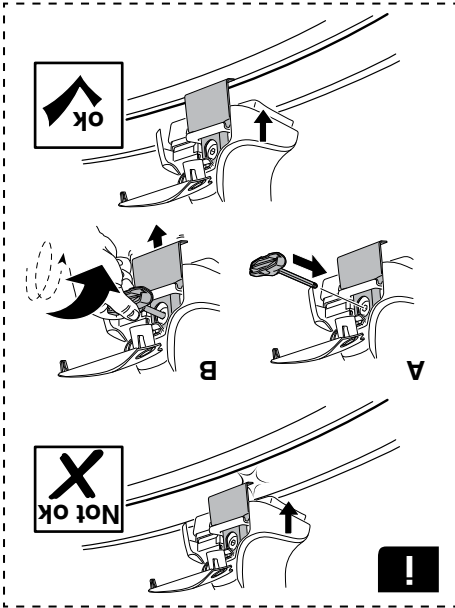
- | | |
|-------|---|
| GB/US | Tighten alternately |
| D | Die Schrauben abwechselnd |
| F | Serrer alternativement chaque côté |
| NL | Afwisselend aan de linker- en de rechterkant aandraaien |
| I | Alternare il serraggio delle viti |
| E | Apretar alternativamente |
| PT | Aprete alternadamente |
| S | Dra åt växelvis |
| FIN | Kierrä vuorotellen |
| EST | Pinguldage vaheldumisi |
| LAT | Pievicīet pārtīvis |
| LIT | Užsukinėkite pakaitomis |
| PL | Słubę dokręcaj naprzemiennie |
| RU | Затягивайте попеременно |
| CZ | Pokrétla bagazníka dokręcaj dokręcaj naprzemiennie. |
| SK | Dotiahnuť striedavo |
| SLO | Privijajte izmenično. |
| HR | Natizmajte zaizmenično. |
| HU | Egyenestől fuggetlenül szorítandó |
| GR | Ζφίτυστε εναλλάξ |
| TR | Dönüştürmlü sıkın |
| 中文 | 交替拧紧 |
| 한국어 | 변갈아 가며 조이십시오. |
| 日本語 | 交互に締め付けてください。 |
| ไทย | ขันสกรูสลับกัน |

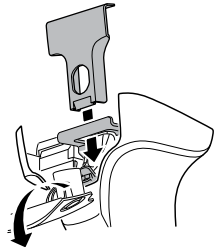
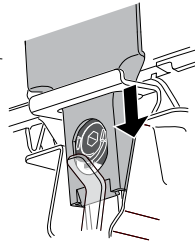
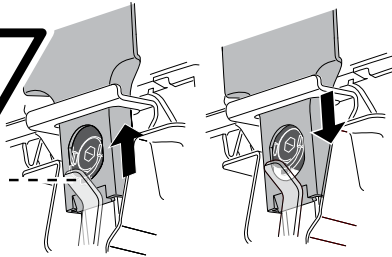
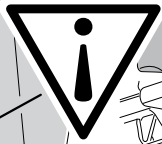
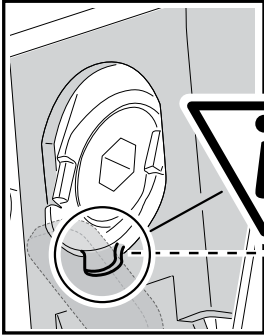
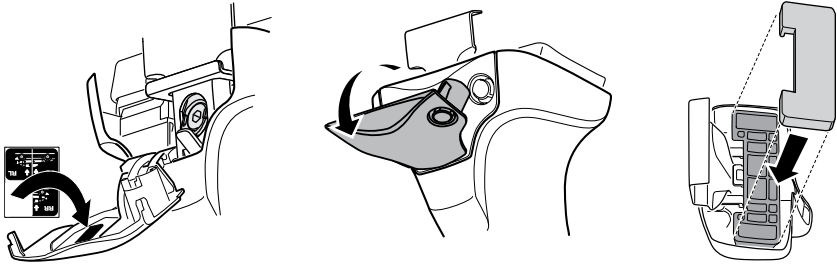


SSANGYONG Actyon, 5-dr SUV, 06-	270 mm	700 mm	10 5/8"	27 1/2"
SSANGYONG Actyon, 4-dr Double Cab, 06-	270 mm	700 mm	10 5/8"	27 1/2"
	X mm	Y mm	X inch	Y inch



9

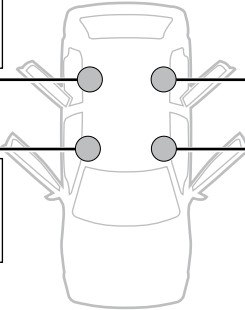
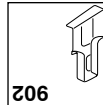
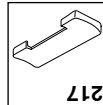
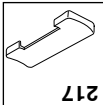
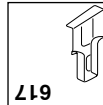
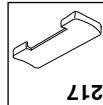
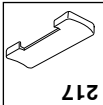
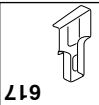




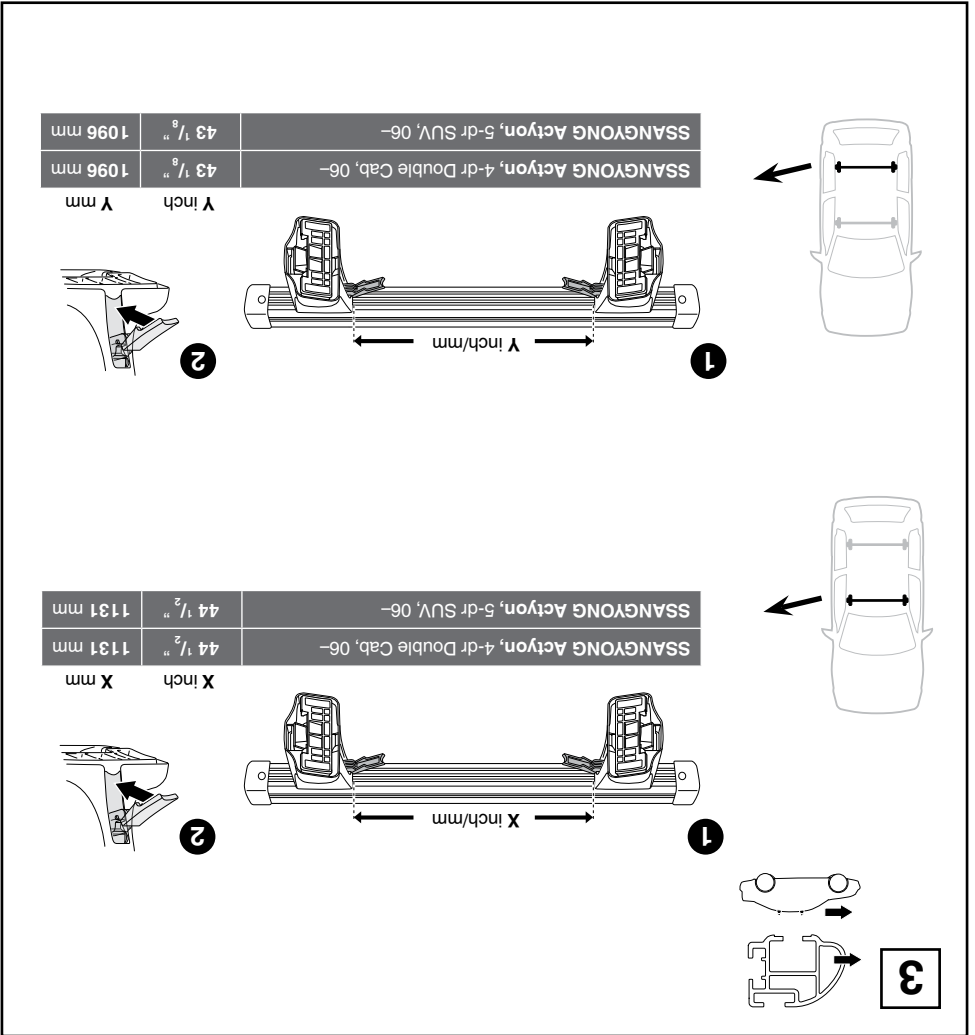
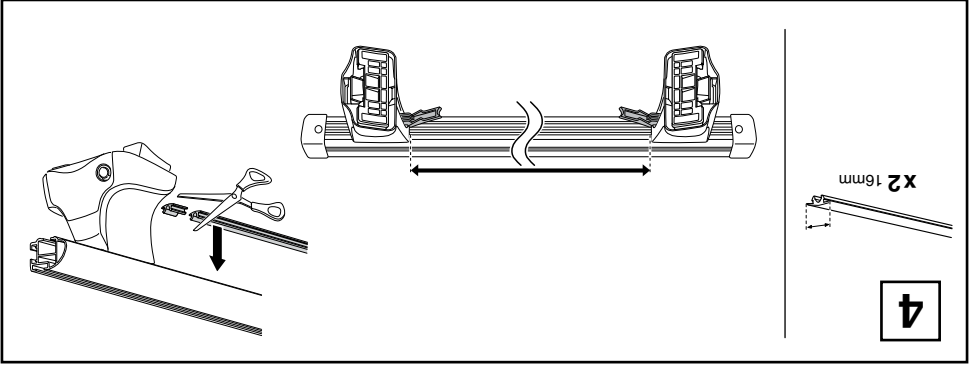
C

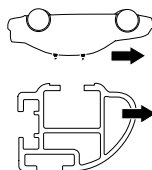
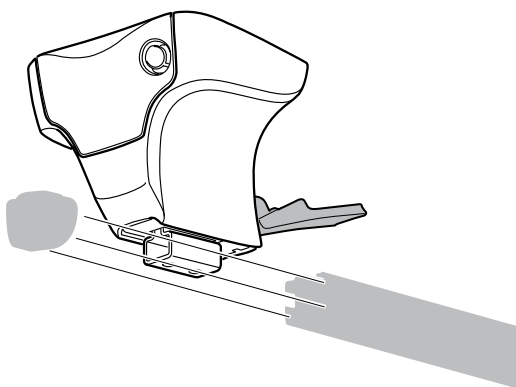
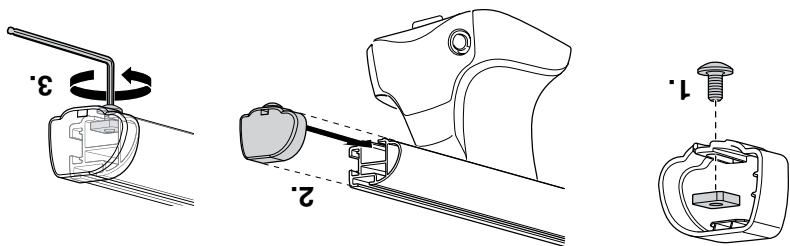
B

A



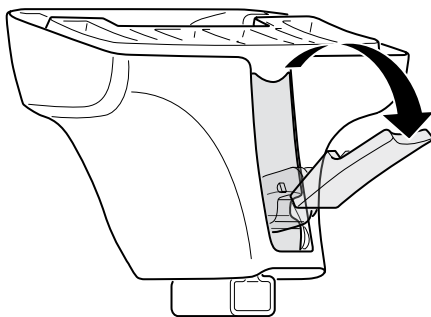
SSANGYONG Actyon, 4-dr Double Cab, 06-
SSANGYONG Actyon, 5-dr SUV, 06-



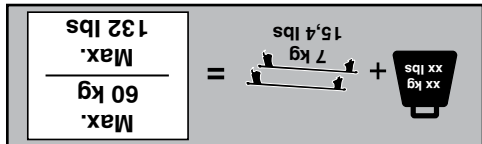
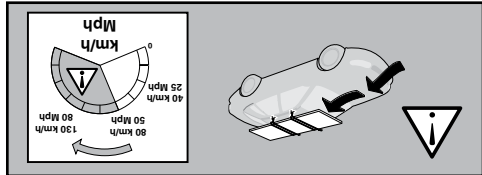
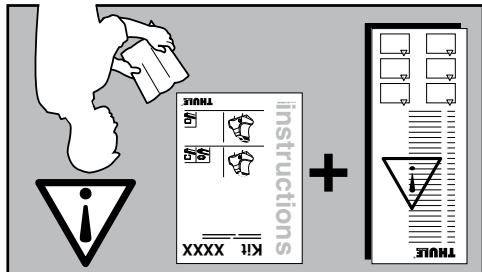
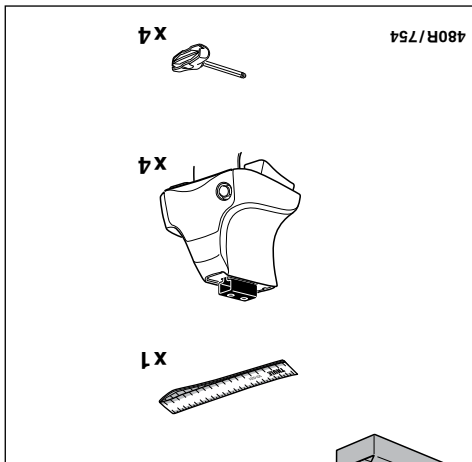
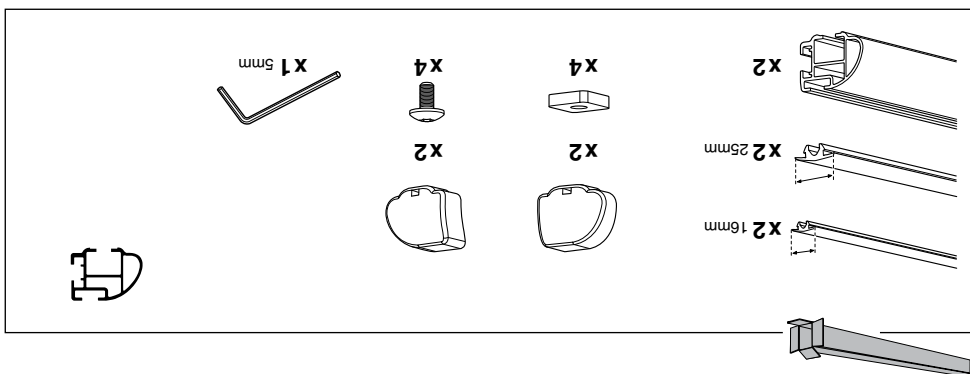
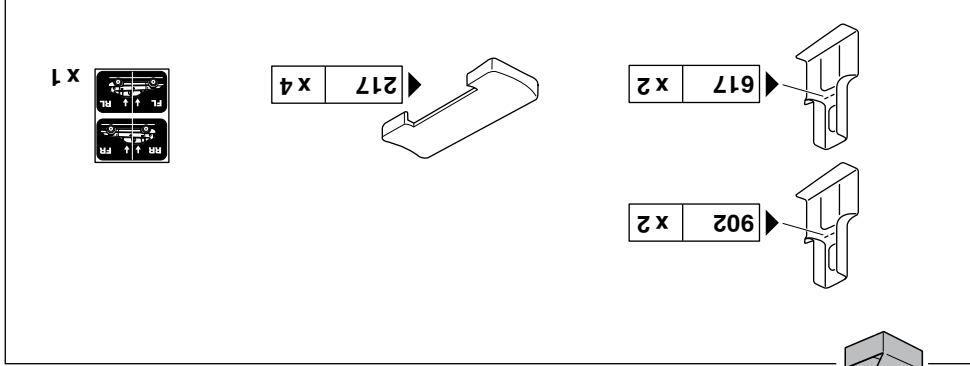


- x2
- x2
- x4
- x4
- x1 5mm

2



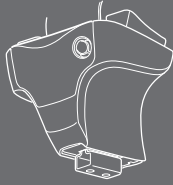
1



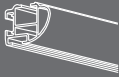
instructions

Kit 1448

SSANGYONG Actyon, 4-dr Double Cab, 06-
SSANGYONG Actyon, 5-dr SUV, 06-



480R
754



PROFESSIONAL

ISO 11154-E

THULE
SWEDEN[®]