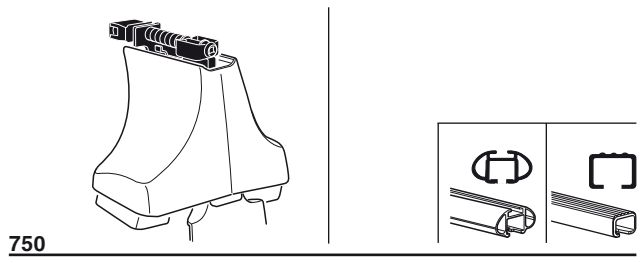
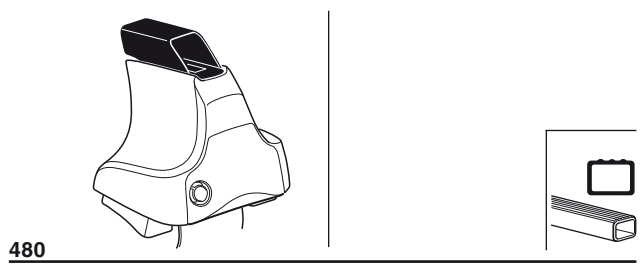
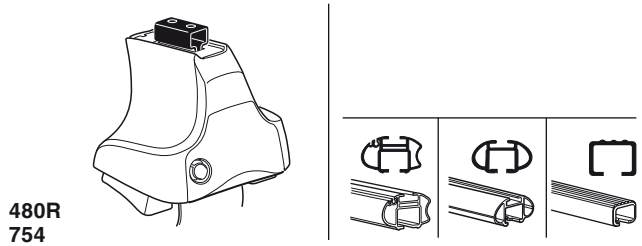


# Kit 1078

MITSUBISHI Colt, 3-dr Hatchback, 96-04



xx kg  
 xx lbs + 7 kg / 15,4 lbs = **Max. 50 kg**  
 3 kg / 6,6 lbs = **Max. 110 lbs**

80 km/h 130 km/h  
 50 Mph 80 Mph  
 40 km/h 25 Mph  
**km/h Mph**

**THULE** + **Kit XXXX**

x1 x4 x4 x4

480R/754

x1 x4 x4 x4

480

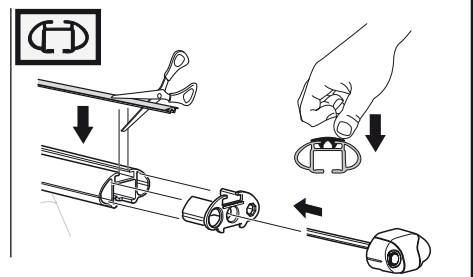
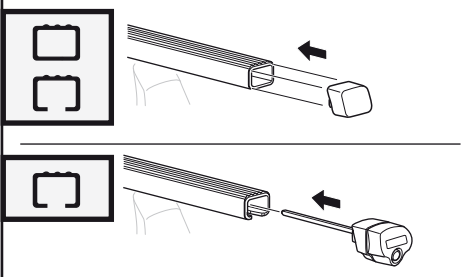
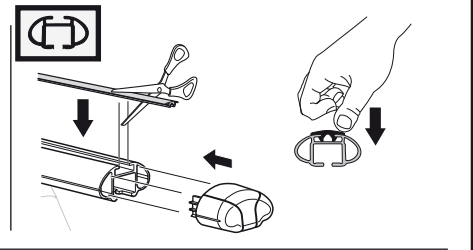
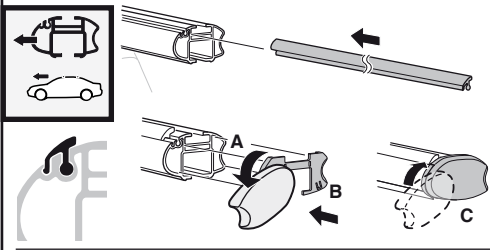
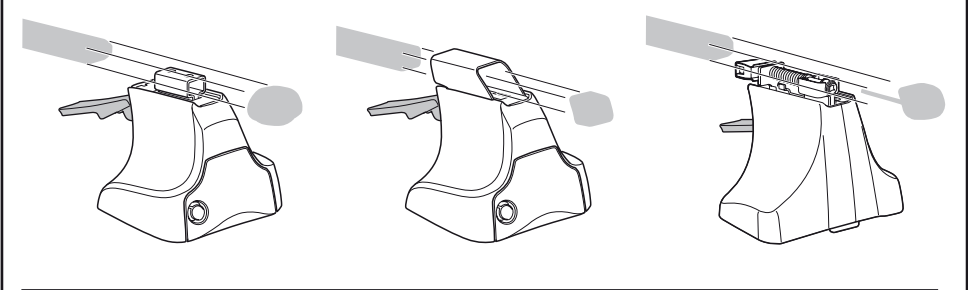
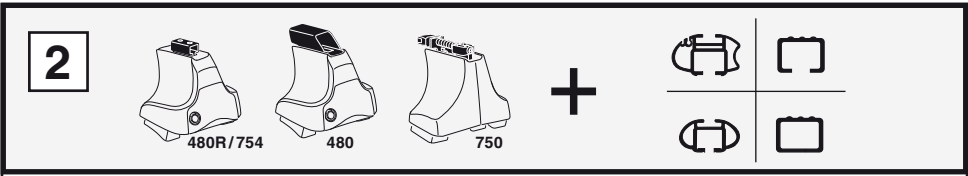
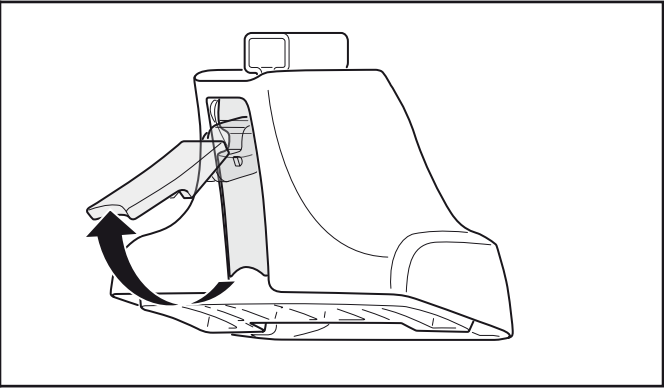
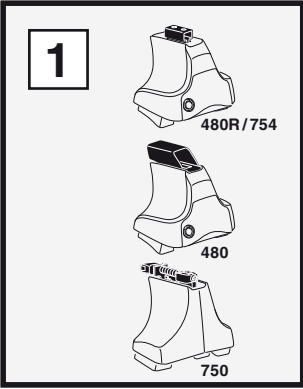
x1 x4 x4

750

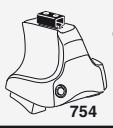
x2	x2	x2	x2	x2
x2		x2	x2	
x2		x2	x2	
x4		x4		
		x4		

195 x2 223 x2 11 x1 12 x1 15 x2 x1

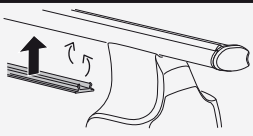
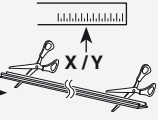
**Kit**



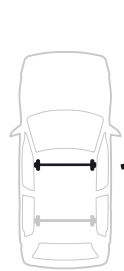
**3**



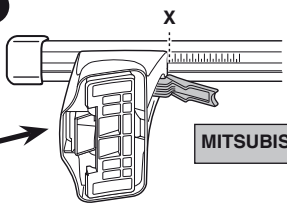
754



750



**1**

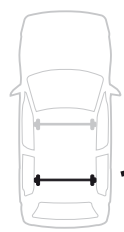


**2**

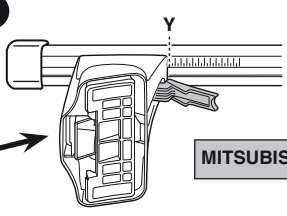


MITSUBISHI Colt, 3-dr Hatchback, 96-04

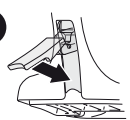
X  
25,5



**1**



**2**



MITSUBISHI Colt, 3-dr Hatchback, 96-04

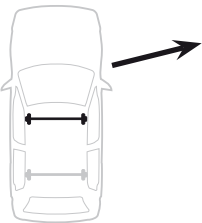
Y  
22,5



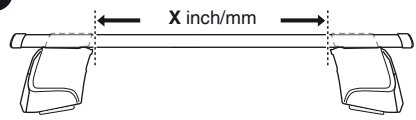
480R



480



**1**

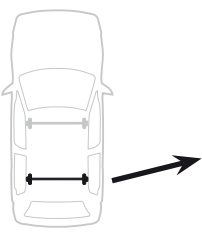


**2**

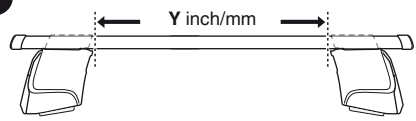


MITSUBISHI Colt, 3-dr Hatchback, 96-04

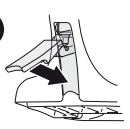
X inch | X mm  
35 5/8" | 906 mm



**1**



**2**



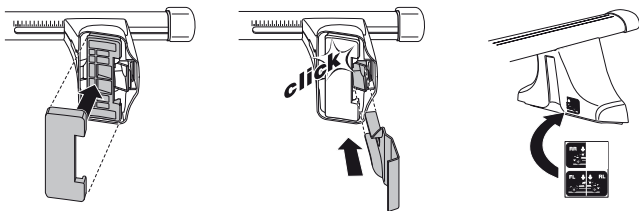
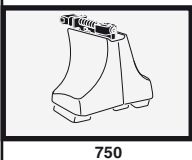
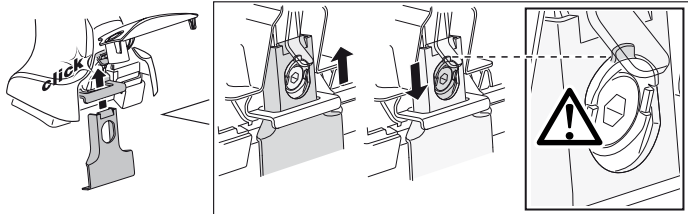
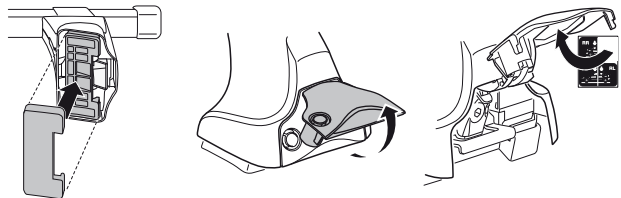
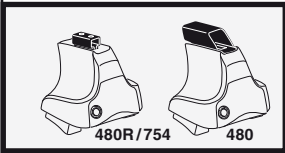
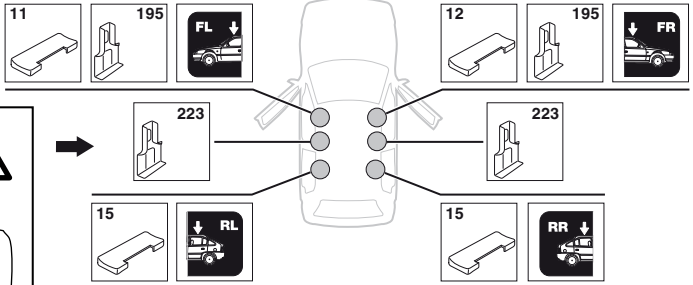
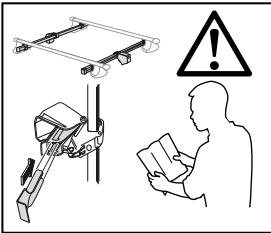
MITSUBISHI Colt, 3-dr Hatchback, 96-04

Y inch | Y mm  
34 1/2" | 876 mm

# 4

MITSUBISHI Colt, 3-dr Hatchback, 96-04

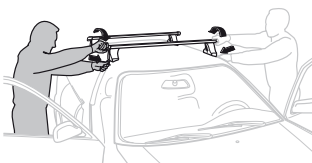
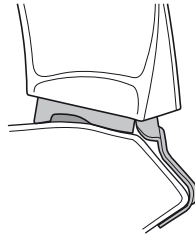
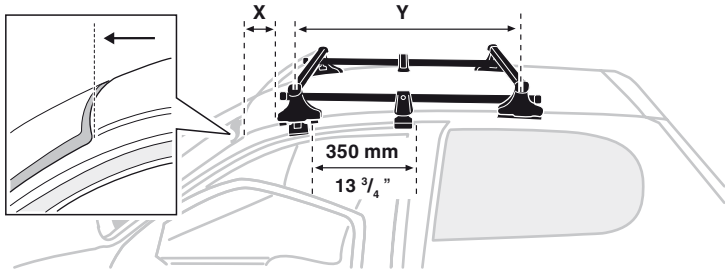
## SRA



5



MITSUBISHI Colt, 3-dr Hatchback, 96-04	X mm	Y mm	X inch	Y inch
	230 mm	700 mm	9"	27 1/2"



- |              |   |            |   |
|--------------|---|------------|---|
| <b>GB/US</b> | Tighten alternately                                     | <b>CZ</b>  | Pokrétla bagazníka dokřečaj dokřečaj naprzemiennie. |
| <b>D</b>     | Die Schrauben abwechselnd anziehen                      | <b>SK</b>  | Dofahujte striedavo                                 |
| <b>F</b>     | Serrer alternativement chaque côté                      | <b>SLO</b> | Privijajte izmenično.                               |
| <b>NL</b>    | Afwisselend aan de linker- en de rechterkant aandraaien | <b>HR</b>  | Naizmjenočno zategnite                              |
| <b>S</b>     | Alternare il serraggio delle viti                       | <b>HU</b>  | Egymástól függetlenül szorítandó                    |
| <b>I</b>     | Apretar alternativamente                                | <b>GR</b>  | Σφίγγετε εναλλάξ                                    |
| <b>PT</b>    | Aperte alternadamente                                   | <b>TR</b>  | Dönüşümlü sıkın                                     |
| <b>S</b>     | Dra át växelvis   | <b>中文</b>  | 交替拧紧  |
| <b>FIN</b>   | Kierrä vuorotellen                                      | <b>한국어</b> | 번갈아 가며 조이십시오.                                       |
| <b>EST</b>   | Pinguldage vaheldumisi                                  | <b>日本語</b> | 交互に締め付けてください。                                       |
| <b>LAT</b>   | Pievelciot pamišus                                      | <b>ไทย</b> | ขันในแบบสลับ  |
| <b>LIT</b>   | Užsukinėkite pakaitomis                                 |            |   |
| <b>PL</b>    | Śruby dokřečaj naprzemiennie                            |            |   |
| <b>RU</b>    | Затягивайте попеременно                                 |            |   |

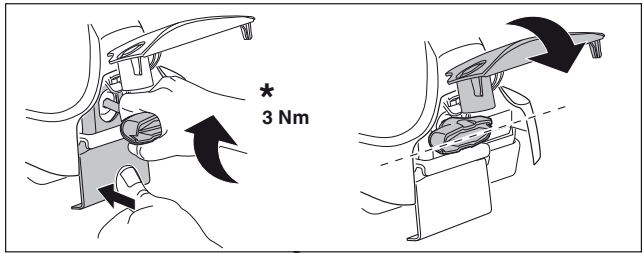
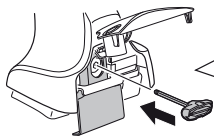
6



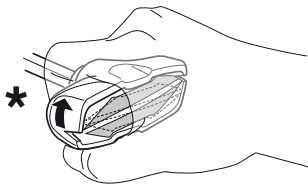
480R/754



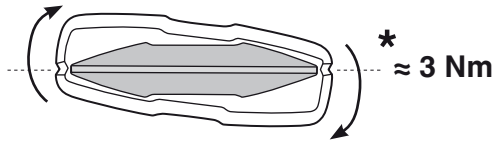
480



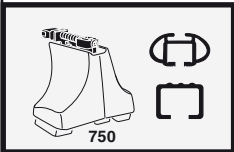
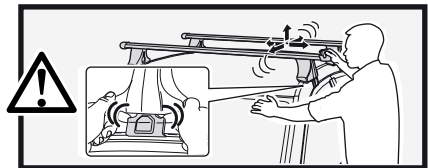
\*  
3 Nm



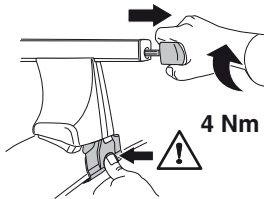
\*



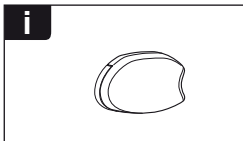
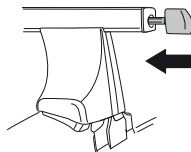
\*  
≈ 3 Nm



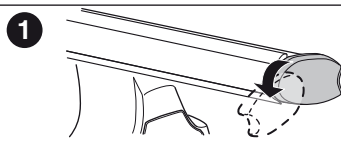
750



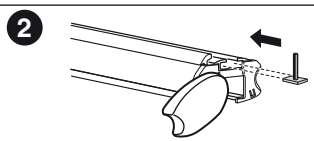
4 Nm



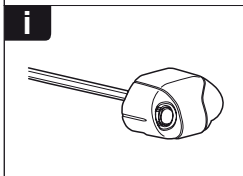
i



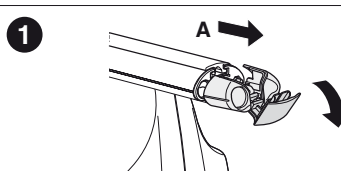
1



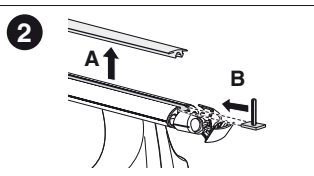
2



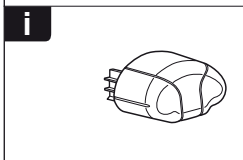
i



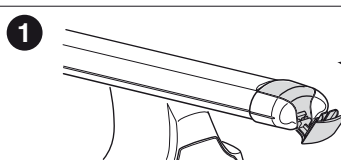
1



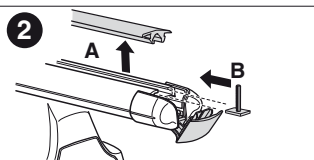
2



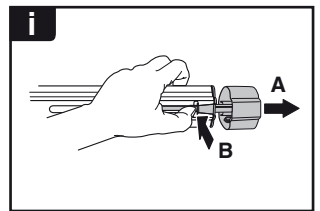
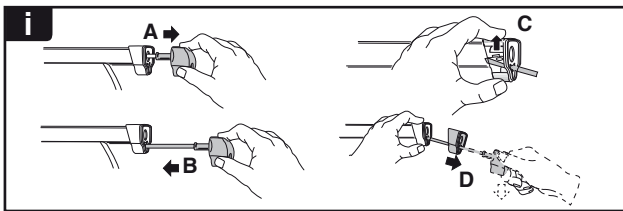
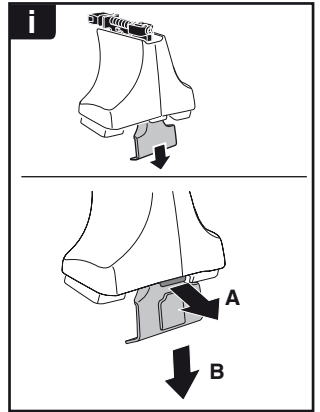
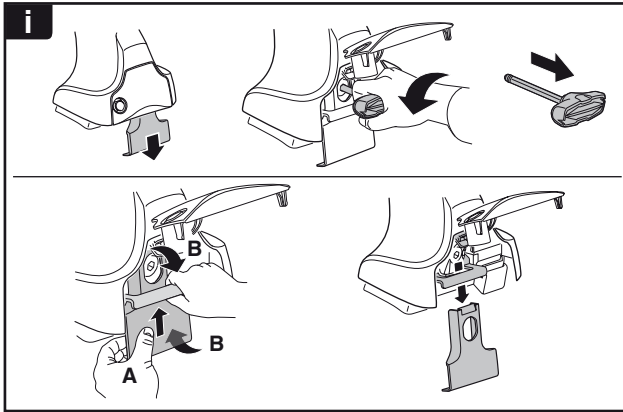
i



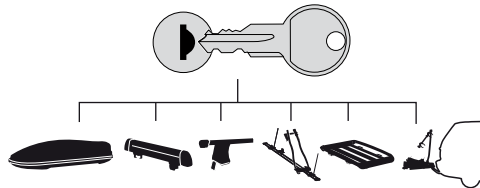
1



2



**THULE**  
SWEDEN  
**ONE  
KEY  
SYSTEM**



- 544 (x4)
- 596 (x6)
- 588 (x8)
- NA 510 (x10)
- EUR 452 (x12)
- ASIA



WW ▶ Thule Sweden AB, Box 69, 330 33 Hillerstorp, SWEDEN  
NA ▶ Thule Inc., 42 Silvermine Road, Seymour, Connecticut 06483, USA

info@thule.com  
customer.service@thule.com

www.thule.com